



**BORDERLANDS
RESTORATION
NETWORK**

**REBUILD.
RESTORE.
RECONNECT.**

OUR MISSION

We partner to grow a restorative economy by rebuilding healthy ecosystems, restoring habitat for plants and wildlife, and reconnecting our border communities to the land through shared learning.

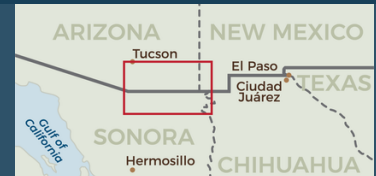
PRESS KIT

Last updated: October 2023

OUR VISION

We envision connected borderlands where rivers flow, plants, wildlife and cultures thrive, and communities develop an inclusive restorative economy where a sense of place inspires a sense of purpose.

WHERE WE WORK & EIJ



Borderlands Restoration Network is dedicated to being inclusive, transparent, and fair, recognizing injustices, furthering our own education, listening and taking action, while also encouraging diverse perspectives and experiences representative of the culturally-diverse and multinational borderlands.



Borderlands Restoration Network works on both sides of the border, primarily in four watersheds that include Santa Cruz and Cochise Counties and the northeastern section of Sonora, Mexico.

WHY ECOLOGICAL RESTORATION?

Ecological Restoration: is the process of assisting the recovery of an ecosystem that has been degraded, damaged, or destroyed.



The United States and Mexico are facing increased pressures from climate changes including long standing drought that has worsened trends of habitat degradation and fragmentation. Ongoing regional aridification means that 96% of Arizona's historic rivers no longer have surface flows.

Unfortunately, past land mismanagement has also drastically altered our landscape causing severe seasonal soil erosion. This has cascading effects on vegetation, water availability, and wildlife habitat. These effects are only accelerating as we start to suffer the full consequences of climate change, continue to over pump groundwater, and increase habitat degradation and fragmentation.

Through ecological restoration, we can help move our landscapes to a state of recovery and resilience to sustain biodiversity and improve resistance in a changing climate.

Tagline: Rebuild. Restore. Reconnect.

REBUILD

healthy ecosystems.

RESTORE

habitat for plants and animals.

RECONNECT

to the land through shared learning.



RESTORATIVE ECONOMY:

A restorative economy creates a synergy between human economic activity and natural systems to build a more prosperous and socially-just local economy. Standing in contrast to an extractive economy, which depletes resources, degrades ecological processes, and decreases biodiversity. A restorative economy works to regenerate resources, enhance processes and increase biodiversity.



WATCH THIS SHORT VIDEO TO LEARN MORE ABOUT BORDERLANDS RESTORATION NETWORK.



REBUILDING HEALTHY ECOSYSTEMS



1,200 Acres of
Public & Private
Land Impacted



3,371 Erosion
Control Structures
Installed

Our Watershed Restoration Program engages a multi-pronged approach to build climate resiliency by installing water harvesting and erosion control structures which increase surface water infiltration, recharge groundwater basins and reduce erosion all while sequestering carbon, and enhancing native habitat for wildlife. Our crews have installed over 3,371 of these structures across Southeastern Arizona directly impacting 1200 acres of public and private land.

View this short video to learn more about erosion control structures and how they function. Valer Clark, featured in this video is a founder of Borderlands Restoration Network and Cuenca Los Ojos.



**WATCH THIS SHORT VIDEO TO LEARN MORE
ABOUT SUCCESSFUL EROSION CONTROL IN THE
BORDERLANDS.**



RESTORING HABITAT FOR PLANTS & ANIMALS



**BORDERLANDS
NURSERY & SEED**



300,000
Native Plants
Propagated for Retail
& Restoration Uses



2,590 Collections
of Native Seed
Collected from
770 Species



3,774
Agaves Planted Across
the Borderlands to
Support Migratory Bats



1,000 Emory oak
acorns planted at
the Borderlands
Wildlife Preserve

Borderlands Nursery & Seed works to restore habitat by producing genetically diverse native plants and seeds from and for the Madrean Sky Islands ecoregion.

Our crews have ethically hand-collected over 2,590 accessions of wild native seed from 770 species, maintaining an important seed bank for the region. From this seed we have also propagated 300,000 native plants for the general public and for restoration projects for state and federal contracts.

A special project for this program has been producing and planting agaves in partnership with Bat Conservation International to support migratory nectar-feeding bats that annually migrate from Mexico to Arizona. To date we have planted over 3,700 agaves across the borderlands. Volunteers have also been trained and engaged to identify and map important agave populations in the area to inform future efforts.

**LISTEN TO LEARN MORE
ABOUT AGAVES FOR BATS**



@borderlandsplants

Shop BN&S:
www.borderlandsplants.org



BORDERLANDS WILDLIFE PRESERVE

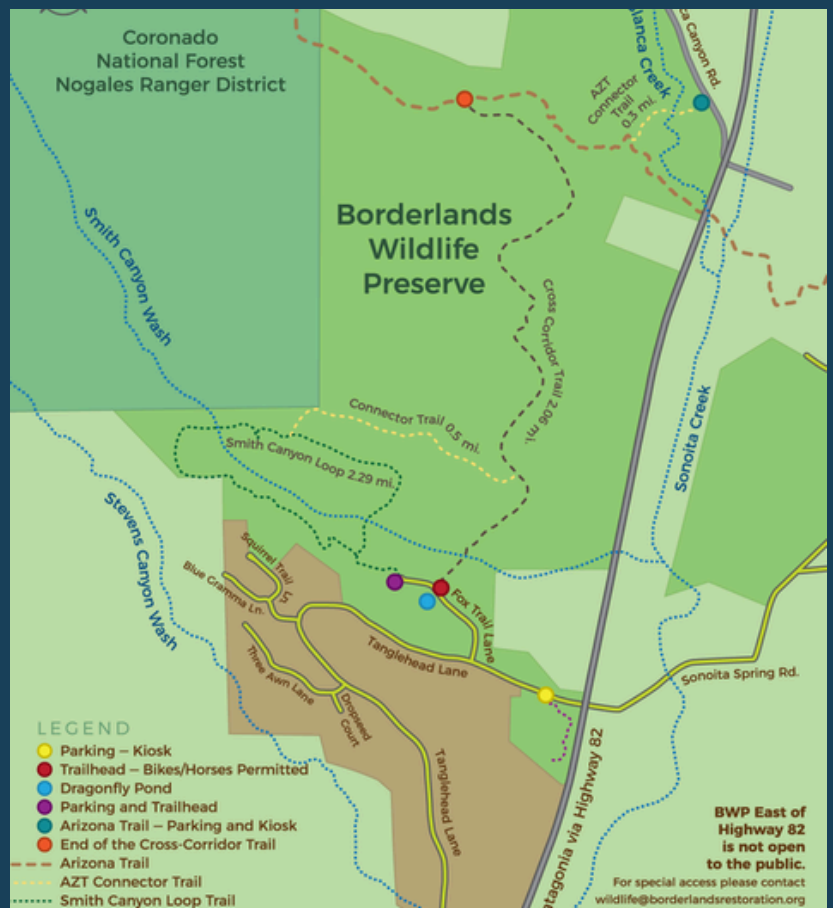


The 1800 acre and growing Borderlands Wildlife Preserve is protected and managed to conserve critical wildlife habitat, and to maintain a route for migratory species.

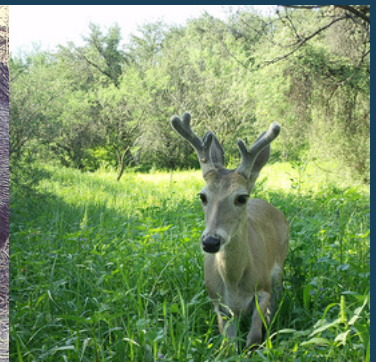
The Borderlands Wildlife Preserve encompasses 1600 acres of protected land that has been identified as a critical migratory corridor for animals in the region.

Active restoration is underway to install erosion control structures, manage native vegetation and main a system of permanent watering sites to support wildlife.

The preserve also features 8 miles of publicly accessible hiking trails including a new section of the Arizona Trail.



DOWNLOAD THE BWP TRAIL MAP.



@borderlandswildlifepreserve

RECONNECTING PEOPLE TO THE LAND



Borderlands
Earth Care Youth



Şu:dagī 'O Wud
Doakag
(Water is Life)



Field Courses &
Internship
Program



Women
Grow Food



Virtual & In Person
Workshops



Mesquite
Workshops

A cornerstone of the BRN mission is education. Through trinational internship programs, cross-border learning, workshops, youth programming, and community outreach, we work to deepen connections in the borderlands and inspire environmental leadership and engagement.

To date, we have hosted over 2,100 participants from borderland communities across southeastern AZ, Northern Sonora, and the Tohono O'odham Nation.

**WATCH THIS
SHORT VIDEO FOR
AN INSIDE LOOK
AT THE SONORAN
FIELD COURSE.**



**WATCH THIS
SHORT VIDEO
FOR AN INSIDE
LOOK AT
BORDERLANDS
EARTH CARE
YOUTH.**





VISITING GROUPS & HANDS ON LEARNING



BRN is also an educational destination for visiting groups including gap year programs, and universities providing a unique hands-on learning opportunity where participants work on active projects to learn about the borderlands region and our holistic approach to restoration. Our work would also not be possible without the help of our many volunteers that assist in our seed lab, nursery and on restoration projects.



COMMUNITY RESTORATION & OUTREACH



Douglas Library Native Plant Patio



Patagonia Youth Enrichment Center Garden Project



Huachuca City Community Garden



Patagonia Community Forest in Doc Mock Park

Many of our projects are community-based collaborations that improve and strengthen our communities. Some examples of these include building a native plant patio at the Douglas Public Library, designing and installing rainwater harvesting systems for food gardens at the Patagonia Youth Enrichment Center and the Huachuca City Community Garden, as well as planting a community forest in downtown Patagonia. We also offer free or low-cost workshops to the public on a range of topics including rainwater harvesting, native plants, watershed restoration, and grasslands management.



READ ABOUT THE HUACHUCA CITY GARDEN PROJECT.



PARTNERSHIPS

Partnerships and collaboration are key to our ability to carry out our mission. We partner with over 60 organizations, businesses and nonprofits throughout the state, as well as national and international entities.



PEOPLE

Founded in 2018 BRN was founded by ecologist Dr. Ron Pulliam, who was President of the Ecological Society of America and Science Advisor to the United States Secretary of Interior. Ron and others founded BRN in order to advance the long-term protection and restoration of the Madrean Sky Islands, but also with the explicit goal of training, engaging, and inspiring our local youth to be the next generation of environmental stewards for our region.



MEET THE BRN STAFF & BOARD OF DIRECTORS.



Media Contact:

Rodrigo Sierra Corona
Executive Director
rsierracorona@borderlandsrestoration.org

Addresses:

Mailing:

PO Box 121
Patagonia, AZ 85624

Physical:

Borderlands Restoration Network
320-B School Street
Patagonia, AZ 85624

Borderlands Nursery & Seed

42 San Antonio Road
Patagonia, AZ 85624

Borderlands Wildlife Preserve

The main entrance to the BWP is located appropriately 2.5 miles north of Patagonia on the west side of Highway 82, across from Sonoita Springs Ranch. Turn on Tanglehead Lane at the Borderlands Wildlife Preserve sign to enter the preserve.

Phone: (520) 216-4148

Email: info@borderlandsrestoration.org



**VIEW OUR
ANNUAL REPORT**



www.borderlandsrestoration.org



BORDERLANDS RESTORATION NETWORK

REBUILD. RESTORE. RECONNECT.



Sign-up to
receive our
email updates



Borderlands Nursery &
Seed upcoming events &
plant sales



@borderlandsrestorationnetwork
@borderlandsrestoration
@borderlandsplants
@borderlandswildlifepreserve

www.borderlandsrestoration.org